

The Circle of Willis

Fanny Beerepoot

The Circle of Willis is a vascular network at the base of the brain. It is formed by the interconnection of the following arteries;

- Internal Carotid
- Anterior Cerebral
- Posterior Cerebral
- Basilar
- Anterior Communicating
- Posterior Communicating

When you look at the diagram, in Appendix 1, at the end of this study, you can see that these arteries sit over the brain stem area (diagram taken from Anatomy Coloring Workbook, 2nd Edition. I. Edward Alcamo, Ph.D.) In the Nervous System study we will learn that the Brain Stem represents the Altar of Sacrifice. The Brain Stem goes through the Foramen Magnum which is part of the Occipital Bone which represents the principle of 'self denial', as seen in the Skeletal System study.

The Altar of Sacrifice was a place of complete dedication, showing therefore a total 'self denial'. On this altar the lamb was sacrificed. As the Scriptures tell us, Yahshua has been the perfect, unspotted lamb, sacrificed for us.

1 Peter 1:19; *'But with the precious blood of Messiah, as of a lamb without blemish, without spot.'*

Yahshua was also totally dedicated to YaHWaH. Yahshua showed total self denial, and this just before His crucifixion, His being placed on the Altar of Sacrifice.

Luke 22:42; *'Saying, Father, if thou be willing, remove this cup from me: nevertheless not my will, but thine, be done.'*

As I was looking at this formation of arteries over the brain stem area, YaHWaH opened my eyes to see that these arteries look just like a 'stick person' on a cross! It witnessed to me that Yahshua is the perfect and ultimate sacrifice for us.

Hebrews 10:12, 14; *'But this man, after he had offered one sacrifice for sins forever, sat down on the right hand of Elohim... For by one offering he hath perfected for ever them that are sanctified.'*

It is Yahshua, through His death and resurrection, who has made the way for us to receive the gift of eternal life in the presence of YaHWaH. And it is the Circle of Willis which carries our blood, in which is life, around the throne room area of our body wherein YaHWaH dwells.

1 Peter 1:3; *'Blessed be the Elohim and Father of our Master Yahshua Messiah,*

which according to his abundant mercy hath begotten us again unto a lively hope by the resurrection of Yahshua Messiah from the dead.'

Leviticus 17:11; *'For the life of the flesh is in the blood...'*

Without the Circle of Willis we will die as these arteries unite the brains posterior and anterior blood supplies and provides alternate routes for blood to reach the brain tissue if a carotid or vertebral artery becomes occluded. In just the same way, without the covering of Yahshua's sacrifice, we too will die.

Hebrews 9:22,28; *'And almost all things are by the law purged with blood; and without shedding of blood there is no remission... So also the Messiah was once offered to bear the sins of many, and unto them that look for him shall he appear the second time without sin unto salvation.'*

Romans 6:23; *'For the wages of sin is death; but the gift of Elohim is eternal life through Messiah Yahshua our Master.'*

It is interesting to note the names of some of the arteries. Of particular interest is the 'communicating' arteries. Here once again we can see that the Circle of Willis is a representation of Yahshua because we are told in the Scriptures that when we communicate with our Heavenly Father, we must do so through Yahshua, who is our mediator.

1 Timothy 2:5; *'For there is one Elohim, and one mediator between Elohim and men, the Man Messiah Yahshua.'*

As well as picturing the sacrifice of Yahshua for us, the Circle of Willis also shows, on another level, the need for each one of us to be sacrificed to YaHWaH.

On a personal level, we ask YaHWaH to put us upon the Altar of Sacrifice so that we may come to a point of complete dedication to Him as our carnal flesh nature is burned up so that YaHWaH's Spirit within us can be unveiled.

Romans 12:1; *I beseech you therefore, brethren, by the mercies of Elohim, that you present your bodies a living sacrifice, holy, acceptable unto Elohim, which is your reasonable service.'*

Just as Abraham put Isaac on the altar and Father put Yahshua on the altar, so too must Father put us on the altar and we must give our all to Him. We must sacrifice all our own desires/flesh and let it be burned by the fire of His divine law. It is only when the fire of His law has come down to consume us that we know we are acceptable to Him.

Leviticus 9:23-24; *'And Moses and Aaron went into the tabernacle of the congregation, and came out, and blessed the people: and the glory of YaHWaH appeared unto all the people. And there came out a fire from before YaHWaH, and consumed upon the altar the burnt offering and the fat: which when all the people saw, they shouted, and fell on their faces.'*

Deuteronomy 33:3; *'And he said, YaHWaH came from Sinai, and rose up from Seir unto them... from his right hand went a fiery law for them.'*

Only after we have been sacrificed can we be acceptable for His service. We have to be willing to go through the fire, just as Moses was not afraid to enter into the smoking mount where Father was and Daniel's friends did not think twice to enter into the refining fire of the furnace. We therefore, as individuals, can also be represented in the Circle of Willis, as we too need to be offered up to YaHWaH and become totally dedicated and therefore acceptable to Him.

When looking at how the Circle of Willis is situated we see that the head of the 'stick person' encircles the pituitary gland. This is also interesting because the pituitary gland has two lobes and represents the two tables of stone, the divine law, the ten commandments. So as we are placed on the altar of sacrifice, and our flesh is being burned away, the Law of YaHWaH is being written in our minds, not as a set of do's and don'ts, but rather as a series of promises; we will not steal, lie etc. Is this not what is promised to us in the Scriptures?

Hebrews 8:10; *'For this covenant that I will make with the house of Israel after those days, saith YaHWaH; I will put my laws into their mind, and write them in their hearts: and I will be to them Elohim, and they shall be to me a people.'*

I remember in a Sermon tape I listened to some time ago the speaker was telling that to be 'holy' you have to be laid on the altar, as in Exodus we are told that whosoever toucheth the altar shall be holy.

Exodus 29:37; *'Seven days thou shalt make an atonement for the altar, and sanctify it; and it shall be an altar most holy: whosoever toucheth the altar shall be holy.'*

It was for this reason that Isaac had to be laid upon the altar as out of him came the seed of promise.

Genesis 21:12; *'...for in Isaac shall thy seed be called.'*

And as descendants of Isaac and Jacob/Israel we are called to be a holy nation.

1 Peter 2:9; *'But ye are a chosen generation, a royal priesthood, an holy nation, a peculiar people; that ye should show forth the praises of him who hath called you out of darkness into this marvellous light.'*

Therefore we can also see ourselves pictured in the Circle of Willis. It is by being placed on the altar that we may become holy.

Romans 12:1; *'I beseech you therefore, brethren, by the mercies of Elohim, that you present your bodies a living sacrifice, holy, acceptable unto Elohim, which is your reasonable service.'*

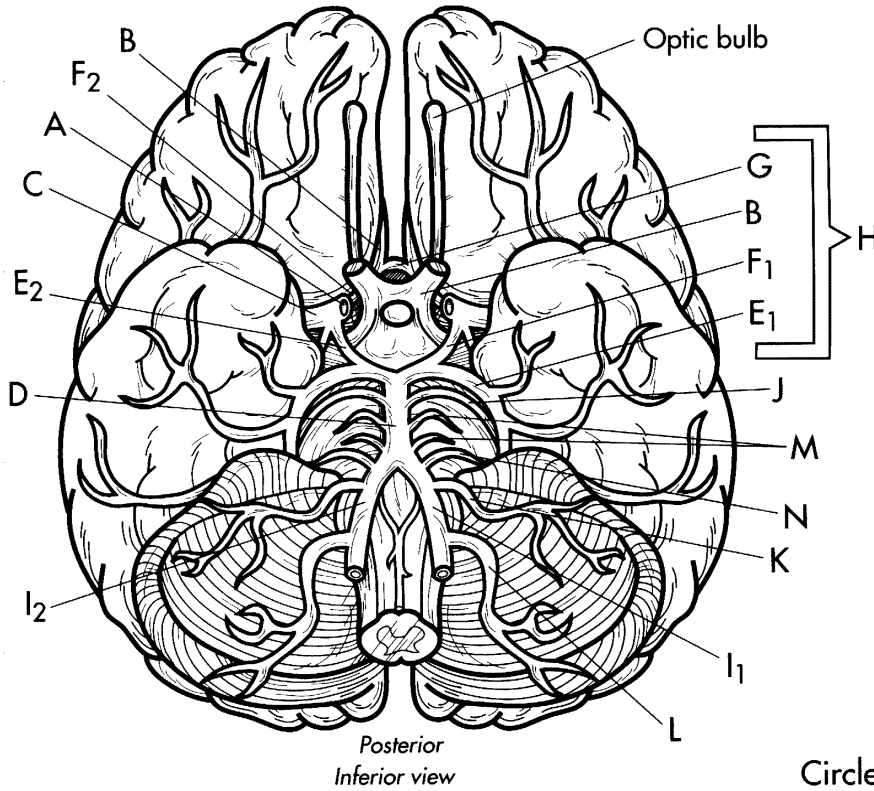
Just a last thought, the Brazen Altar (Brain Stem), upon which Yahshua and we lie (the Circle of Willis), is three cubits high. This tells us that the provision was Divine in origin, that atonement emanates solely from YaHWaH. It is Father who offers us up to Himself, we cannot of our own strength offer ourselves up.

Being cleansed by the blood of Yahshua, may we pray that Father will also offer us up to Himself so that we may be acceptable unto Him for His service and Glory!

I pray these insights have been a blessing to you.

Appendix 1

Arteries to the Brain



Circle of Willis H

- | | | |
|--------------------------------------|----------------|---|
| Internal carotid artery | A | ○ |
| Anterior cerebral artery | B | ○ |
| Middle cerebral artery | C | ○ |
| Basilar artery | D | ○ |
| Left posterior cerebral artery | E ₁ | ○ |
| Right posterior cerebral artery | E ₂ | ○ |
| Left posterior communicating artery | F ₁ | ○ |
| Right posterior communicating artery | F ₂ | ○ |
| Anterior communicating artery | G | ○ |
| Circle of Willis | H | ○ |
| Left vertebral artery | I ₁ | ○ |
| Right vertebral artery | I ₂ | ○ |
| Superior cerebellar artery | J | ○ |
| Anterior inferior cerebellar artery | K | ○ |
| Posterior inferior cerebellar artery | L | ○ |
| Pontine | M | ○ |
| Labyrinthine artery | N | ○ |

